



# Flight Plan & Site Survey

Created using **RPAS Wilco**®

Operation Name:	Drone Dauphinas
Pilot Name:	██████████
Pilot Certificate:	██████████
Flight Start:	May 1, 2023 6:46 PM
Flight End:	May 1, 2023 8:46 PM
Flight Area (Latitude):	45° 1' 18.94" N ( 45.022 )
Flight Area (Longitude):	73° 36' 52.00" W ( -73.614 )
Altitude - Radius:	Alt: 700 ft - Rad: 926.0 m ( 0.5 nm)
Airspace:	UNCONTROLLED
FIR - Contact:	CZUL - 506-867-7173

Please ensure you received all required authorizations prior to flight.

## Disclaimer

This Site Survey was created using RPAS Wilco by AIM Robotics. The flight plan contained is intended only for RPAS flights on the date/time and location specified. The user accepts all responsibility for the accuracy and completeness of the information contained.

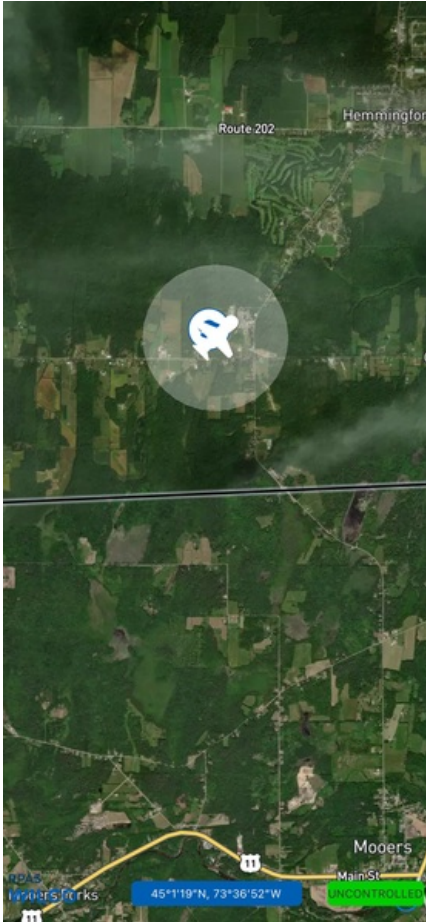
For the complete Terms & Conditions, see

<https://rpswilco.com/#/tnc>



## Included

- Site Survey
- Obstacles (if available)
- Nearby Aerodromes
- Canadian Aviation Regulations
- GFA
- Aerodrome Supplements
  - METAR & TAF (if available)
  - NOTAMS
  - CFS

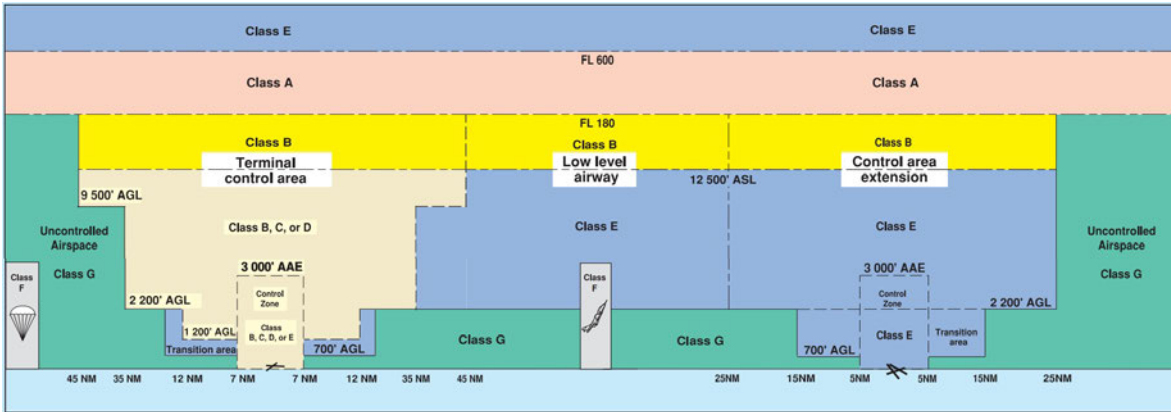
## Flight Map



## MAP Details

	Latitude	Longitude
 <b>MODEL</b>	45° 1' 18.94" N ( 45.022 )	73° 36' 52.00" W ( -73.614 )
 <b>Pilot</b>	45° 1' 22.54" N ( 45.0229 )	73° 36' 55.60" W ( -73.6154 )

## Airspace Classification



## Overlying Airspaces

Class	Name	Floor	Ceiling
E	Montreal FIR CAE	2000MSL	12500MSL
B	Montreal FIR CAE	12500MSL	18000MSL
C	Montral, QC TCA XPNDR MANDTRY	5000MSL	12500MSL
E	T739 Airway	2200AGL	12500MSL
B	T739 Airway	12500MSL	18000MSL
E	T721 Airway	2200AGL	12500MSL
B	T721 Airway	12500MSL	18000MSL
E	T705 Airway	2200AGL	12500MSL
B	T705 Airway	12500MSL	18000MSL
E	Montreal FIR CAE	6000MSL	12500MSL
B	Montreal FIR CAE	12500MSL	18000MSL

## Nearest Aerodromes & Distance from Operation

ST MICHEL (CML9 HELIPOINT Reg)	Lat: 45.255	Long: 73.551	26.39 KM	14.25 NM
ST MATHIEU DE LAPRAIRIE (CML8 AERODROME Reg)	Lat: 45.311	Long: 73.565	32.376 KM	17.48 NM
ST JEAN (CYJN AERODROME Cert)	Lat: 45.294	Long: 73.281	39.985 KM	21.59 NM

# Canadian Aviation Regulations

## Division III — General Operating and Flight Rules

For full listing please visit <https://laws-lois.justice.gc.ca/eng/regulations/SOR-96-433/FullText.html#s-901.27>

### Visual Line-of-sight

- **901.11 (1)** Subject to subsection (2) no pilot shall operate a remotely piloted aircraft system unless the pilot or a visual observer has the aircraft in visual line-of-sight at all times during flight.
- **(2)** A pilot may operate a remotely piloted aircraft system without the pilot or a visual observer having the aircraft in visual line-of-sight if the operation is conducted in accordance with a special flight operations certificate — RPAS issued under section 903.03.

### Procedures

- **901.23 (1)** No pilot shall operate a remotely piloted aircraft system unless the following procedures are established:
  - **(a)** normal operating procedures, including pre-flight, take-off, launch, approach, landing and recovery procedures; and
  - **(b)** emergency procedures, including with respect to
    - **(i)** a control station failure,
    - **(ii)** an equipment failure,
    - **(iii)** a failure of the remotely piloted aircraft,
    - **(iv)** a loss of the command and control link,
    - **(v)** a fly-away, and
    - **(vi)** flight termination.
- **(2)** If the manufacturer of the remotely piloted aircraft system provides instructions with respect to the topics referred to in paragraphs (1)(a) and (b), the procedures established under subsection (1) shall reflect those instructions.
- **(3)** No pilot shall conduct the take-off or launch of a remotely piloted aircraft unless the procedures referred to in subsection (1) are reviewed before the flight by, and are immediately available to, each crew member.
- **(4)** No pilot shall operate a remotely piloted aircraft system unless the operation is conducted in accordance with the procedures referred to in subsection (1).

### Site Survey

**901.27** No pilot shall operate a remotely piloted aircraft system unless, before commencing operations, they determine that the site for take-off, launch, landing or recovery is suitable for the proposed operation by conducting a site survey that takes into account the following factors:

- **(a)** the boundaries of the area of operation;
- **(b)** the type of airspace and the applicable regulatory requirements;
- **(c)** the altitudes and routes to be used on the approach to and departure from the area of operation;
- **(d)** the proximity of manned aircraft operations;
- **(e)** the proximity of aerodromes, airports and heliports;
- **(f)** the location and height of obstacles, including wires, masts, buildings, cell phone towers and wind turbines;
- **(g)** the predominant weather and environmental conditions for the area of operation; and
- **(h)** the horizontal distances from persons not involved in the operation.

### Operations at or in the Vicinity of an Aerodrome, Airport or Heliport

- **901.47 (1)** No pilot shall operate a remotely piloted aircraft at or near an aerodrome that is listed in the *Canada Flight Supplement* or the *Water Aerodrome Supplement* in a manner that could interfere with an aircraft operating in the established traffic pattern.
- **(2)** Subject to section 901.73 no pilot shall operate a remotely piloted aircraft at a distance of less than
  - **(a)** three nautical miles from the centre of an airport; and
  - **(b)** one nautical mile from the centre of a heliport.
- **(3)** No pilot shall operate a remotely piloted aircraft at a distance of less than three nautical miles from the centre of an aerodrome operated under the authority of the Minister of National Defence unless the operation is conducted in accordance with a special flight operations certificate — RPAS issued under section 903.03.

### Records

- **901.48 (1)** Every owner of a remotely piloted aircraft system shall keep the following records:
  - **(a)** a record containing the names of the pilots and other crew members who are involved in each flight and, in respect of the system, the time of each flight or series of flights and
  - **(b)** a record containing the particulars of any mandatory action and any other maintenance action, modification or repair performed on the system, including
    - **(i)** the names of the persons who performed them,
    - **(ii)** the dates they were undertaken,
    - **(iii)** in the case of a modification, the manufacturer, model and a description of the part or equipment installed to modify the system, and
    - **(iv)** if applicable any instructions provided to complete the work.
- **(2)** Every owner of a remotely piloted aircraft system shall ensure that the records referred to in subsection (1) are made available to the Minister on request and are retained for a period of
  - **(a)** in the case of the records referred to in paragraph (1)(a), 12 months after the day on which they are created; and
  - **(b)** in the case of the records referred to in paragraph (1)(b), 24 months after the day on which they are created.
- **(3)** Every owner of a remotely piloted aircraft system who transfers ownership of the system to another person shall, at the time of transfer, also deliver to that person all of the records referred to in paragraph (1)(b).

## QUEBEC

## AERODROME/FACILITY DIRECTORY

## ST-MICHEL QC (Heli)

CML9

<b>REF</b>	N45 15 18 W73 33 03 1.3 ENE 14°W (2017) UTC-5(4) Elev 220' aprx VTA A5002	
<b>OPR</b>	Sylvain Oigny 514-943-7912 Reg PPR	
<b>FLT PLN</b>	(bil)	
<b>FIC</b>	Québec 866-GOMÉTÉO or 866-WXBRIEF (Toll free within Canada) or 866-541-4105 (Toll free within Canada and the USA)	
<b>SERVICES</b>		
<b>FUEL</b>	100LL	
<b>HELI DATA</b>	FATO/TLOF 50' x 50' ASPH Safety Area 65' x 65' Max heli overall leng h 38.6'	
<b>RCR</b>	Opr	
<b>COMM</b>	(bil)	
<b>ATF</b>	tfc 123.2 5NM 2000 ASL outside Montreal TCA	
<b>PRO</b>	Arr/dep 200° fr heli	

## QUEBEC

## AERODROME/FACILITY DIRECTORY

## ST-MATHIEU-DE-LAPRAIRIE QC

CML8

<b>REF</b>	N45 18 40 W73 33 55 2WSW 14°W (2018) UTC-5(4) Elev 155 VTA A5002	
<b>OPR</b>	Aerolane 514-594-2897 Reg PPR	
<b>PF</b>	C-3,5,6	
<b>FLT PLN</b>	(bil)	
<b>FIC</b>	Québec 866-GOMÉTÉO or 866-WXBRIEF (Toll free within Canada) or 866-541-4105 (Toll free within Canada & USA)	
<b>SERVICES</b>		
<b>FUEL</b>	100LL	
<b>S</b>	1,5	
<b>RWY DATA</b>	Rwy13(127°)/31(307°) 3000 x 75 GRVL/ASPH, ctr 20' ASPH Thld 13 displ 600' Thld 31 displ 600'	
<b>RCR</b>	Opr	
<b>COMM</b>		
<b>ATF</b>	tfc 123.2 5NM 3200 ASL excluding Montréal/Pierre Elliott Trudeau Intl CZ, Montréal/St-Hubert CZ and the airspace that lies within Montreal TCA class C airspace	
<b>CAUTION</b>	Lgtd & unlgtd wind turbines to 607 ASL (456 AGL) W of thld 13 (see sketch) and to 653 ASL (456 AGL) aprx 0.7NM S & SW of A/D. 30 AGL P-line crosses apch to Rwy 31, 1400' fr displ thld.	



## QUEBEC

## AERODROME/FACILITY DIRECTORY

## ST-JEAN QC

CYJN

<b>REF</b>	N45 17 40 W73 16 54 Adj SW 15°W (2012) UTC-5(4) Elev 136' VTA A5002 LO6 LO7 LO8 T2 CAP	
<b>OPR</b>	Muni 450-359-2010 Ext 2068 Cert	
<b>PF</b>	A-7,8 FBO/Apron Password: 1182 B-1 C-2,3,4,5,6	
<b>FLT PLN</b>	(bil)	
<b>FIG</b>	Québec 866-GOMÉTEO or 866-WXBRIEF (Toll free w/ in Canada) or 866-541-4105 (Toll free within Canada & USA)	
<b>ACC</b>	Montréal 514-633-3211 or 800-633-1353. All Fit Plns, IFR tng flts PPR. Fit Plns by Fax at 514-633-2877 & include phone numbers where pilot can be reached prior to dep. When twr closed IFR clearance or activation 514-633-3014.	
<b>WX</b>	LWIS H24 LAWO 1230-0230Z± Apr-Oct; 13-02Z± Nov-Mar	
<b>SERVICES</b>		
<b>FUEL</b>	100LL, JA-1 (FSII avbl) 14-21Z± Dec-Mar, 13-21Z Apr-May, 13-21Z Mon-Fri, 13-22Z Sat-Sun Jun-Sep; 14-22Z± Oct-Nov	
<b>OIL</b>	W100, 15W30	
<b>S</b>	4,5,6	
<b>PVT ADV</b>	FBO 123.35	
<b>RWY DATA</b>	Rwy 11(105°)/29(285°) 4012x100 ASPH Thld 11 displ 600'. Rwy 02(015°)/20(195°) 2438x100 ASPH Rwy 06(060°)/24(240°) 2349x100 ASPH	
<b>RWY CERT</b>	Rwy 11/29 AGN IIIA Rwy 02/20 AGN II Rwy 06/24 AGN II	
<b>TWY CERT</b>	Twy: A, B AGN II	
<b>TWY</b>	Twy C uncontrolled.	
<b>RCR</b>	Opr or Twr 450-347-4233 14-21Z± O/T PN during business hrs Rwy 06/24 no win maint. CRFI, PLR/PCN	
<b>LIGHTING</b>	11-(T ME), 29-(TE ME) ARCAL-118.2 type J	
<b>COMM</b>	(bil)	
<b>GND</b>	121.7 1230-0230Z± Apr-Oct; 13-02Z± Nov-Mar	
<b>TWR</b>	118.2 (V) 1230-0230Z± Apr-Oct; 13-02Z± Nov-Mar (emerg only 450-347-4233)	
<b>ATF</b>	118.2 0230-1230Z± Apr-Oct; 02-13Z± Nov-Mar 5NM 3000 ASL	
<b>ARR</b>	Montréal 125.15 268.3	
<b>DEP</b>	Montréal 125.15 268.3	
<b>VFR ADV</b>	134.15	
<b>PRO</b>	Rgt hand circuits Rwy 11 (CAR 602.96). Intsv glider tng fr aprt to 3NM S dly fr mid-Apr to mid-Aug & wknds Sep-Nov. VFR training not auth 0230-1230Z±. <b>VFR Codes:</b> Refer to MONTRÉAL VTPC section VFR FLIGHTS IN MONTRÉAL/TRUDEAU, MONTRÉAL/ST-HUBERT, MONTRÉAL/MIRABEL AND MONTRÉAL TERMINAL CLASS C AIRSPACE. See VTPC for heli arr/dep rte.	
<b>CAUTION</b>	Periodic blasting ops 1NM W of aprt, ctc TWR. Possible uncontrolled win maint eqpt on rwy. Increased bird activity Jul-Dec.	